

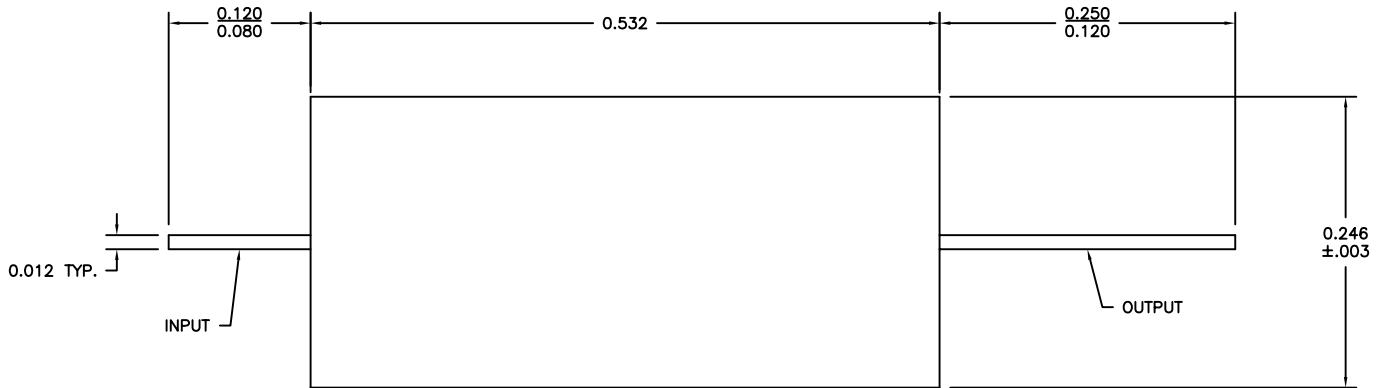


PRODUCT SPECIFICATION
PART NUMBER: ACLM-4748FM22
DESCRIPTION: LIMITER

FREQUENCY: 20 - 6000 MHz
Pin (PK): 1000 W PEAK (1 uS PW, 0.1% DC)
Pin (CW) 20 WATTS *
FLAT LEAKAGE: +12.5 dBm
INSERTION LOSS: 0.9 dB MAX.
VSWR: 1.4:1 TYP.
OUTLINE CONFIGURATION: M22

* NOTE: POWER HANDLING IS LINEARLY
DERATED FROM FULL POWER AT +25°C to
10W at 85°C.

REV.	DESCRIPTION	DATE	APP'D
-	preliminary release	3/7/08	RW



This document is the property of Advanced Control Components Inc. and contains company confidential and/or proprietary information. It is issued in strict confidence and the recipient shall not reproduce, copy, cause to be reproduced or copied, disclose to others, or use as the basis for manufacture, sale or purchase of apparatus the contents or portions thereof of this document without written permission of Advanced Control Components Inc.

CAUTION
UNLESS THIS DRAWING BEARS
AUTHORIZED SIGNED APPROVAL(S)
IT IS PRELIMINARY AND IS NOT TO
BE USED FOR MANUFACTURING
PURPOSES.

UNLESS OTHERWISE SPECIFIED
DIMENSIONS ARE IN INCHES
TOLERANCES ON FINISH: RMS 63
ANGLES: ±1/2° FRACTIONS: ±1/64
4 PLACE DECIMALS: ±.0005
3 PLACE DECIMALS: ±.005
2 PLACE DECIMALS: ±.01

DRAWN BY: R. WILLIAMS	3/7/08
APPROVED BY: J. VANHORN	3/7/08
SHEET: 1 OF 1	
FILECODE: ACLM-4748FM22	