

# Miniature Surface Mount Coaxial Switches



RLC Electronics' miniature surface mount coaxial switch is a single pole two position type. The switch provides extremely high reliability, long life, and excellent electrical performance characteristics in a miniature package. The

power consumption is approximately one half that of the miniature connectorized switches. The switch is available with a choice of four different operating frequencies, three coil voltages, and two different pin configurations

## SR-2min-min-<sup>1-2-3</sup>

Switch Type	Single pole two position			
Frequency (GHz)	DC-2.0	2.0-5.0	5.0-12.4	12.4-18
Insertion Loss (Max dB)	0.2	0.3	0.4	0.7
VSWR (Max)	1.3	1.4	1.5	1.7
Isolation (dB Min)	70	60	50	40

### Power Rating, RF Cold Switching :

See page 5

**Impedance:** 50 ohms

**Operating Power** 25 deg C (ma nominal): 5vdc at 310mA

12vdc at 130mA 28vdc at 75mA

**Connectors:** RF and power: .018

DIA. Pins

**Life:** 1,000,000 operations

**Switching Time:** 15 milliseconds max.

**Weight:** 0.6 oz.

**Environmental Conditions:** MIL-DTL-3928

**Operating Mode:** Failsafe or latching

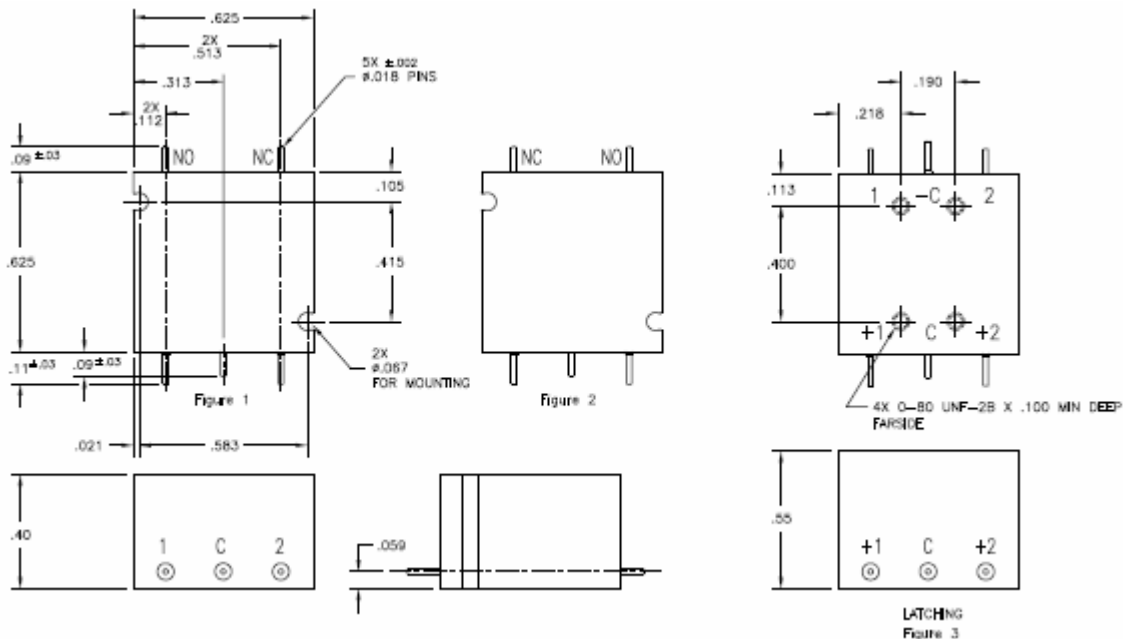
**Switching Sequence:** Break before make

### To designate the Switch desired use:

- 1: 'H' for 12-15 volts coil 'D' for 24-28 volts coil 'E' for 5 volt coil
- 2: '2' for DC-2GHz '5' for DC-5 GHz '12' for DC-12.4 GHz '18' for DC-18 GHz

- 3: 'L' for pulse latching
- 4: 'A' for Figure 1 (pin configuration) "B" for Figure 2 (pin configuration)

Example: SR-2min-min-D-2-A is a SPDT, 24-28vdc, DC-2 GHz, failsafe switch. (per Figure 1)  
 SR-2min-min-D-2-L is a SPDT, 24-28vdc, DC-2 GHz latching switch. (per Figure 3)



Specifications subject to change without notification.

Tolerances unless otherwise specified are .xx +/- .02, xxx +/- .005

Specials requiring closer tolerances, different frequency ranges, special connectors, different materials, finishes, etc. can be furnished upon request.



## RLC ELECTRONICS, INC.

83 Radio Circle, Mount Kisco, New York 10549 Telephone 914-241-1334 Fax 914-241-1753  
 e-mail: [sales@rlcelectronics.com](mailto:sales@rlcelectronics.com) www.rlcelectronics.com